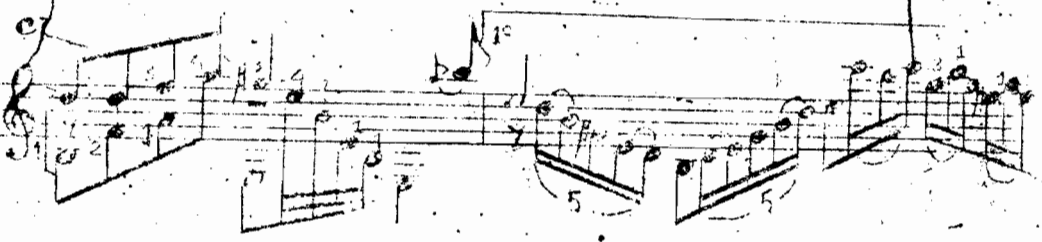
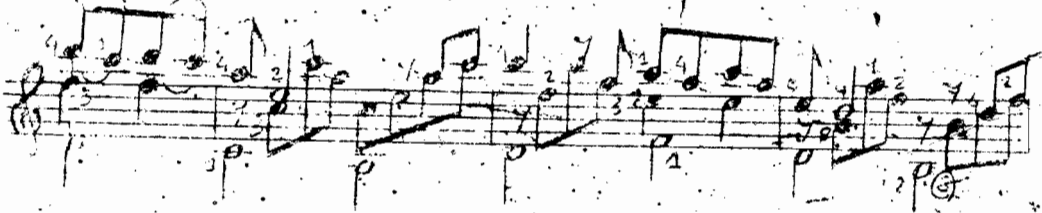
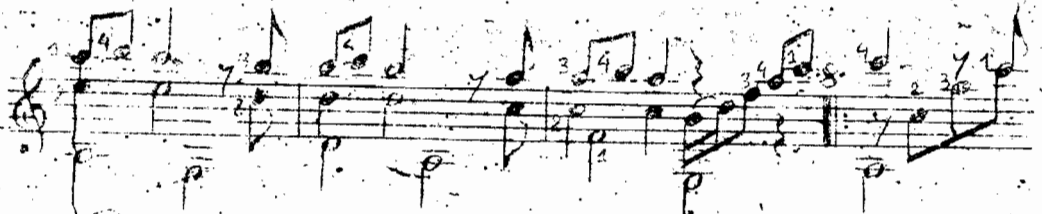
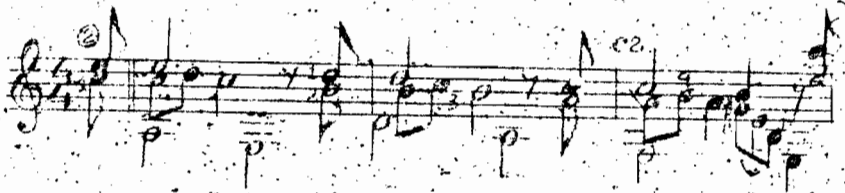


ĐẦU CHIẾN ĐỊA ĐANG



Handwritten musical notation on a single staff. The key signature is one sharp (F#). The notation includes a treble clef, a common time signature (C), and various rhythmic values. A first ending bracket is labeled "1^o" and a second ending bracket is labeled "2^o".

Handwritten musical notation on a single staff. The key signature is one sharp (F#). The notation includes a treble clef, a common time signature (C), and various rhythmic values. It features several triplet markings (3) and a circled number 3 (3Ⓢ) at the end of the staff.

Handwritten musical notation on a single staff. The key signature is one sharp (F#). The notation includes a treble clef, a common time signature (C), and various rhythmic values. It features several triplet markings (3) and a circled number 3 (3Ⓢ) at the end of the staff.

Handwritten musical notation on a single staff. The key signature is one sharp (F#). The notation includes a treble clef, a common time signature (C), and various rhythmic values. It features several triplet markings (3) and a circled number 3 (3Ⓢ) at the end of the staff.

Handwritten musical notation on a single staff. The key signature is one sharp (F#). The notation includes a treble clef, a common time signature (C), and various rhythmic values. It features a triplet marking (3) and a circled number 3 (3Ⓢ) at the end of the staff.