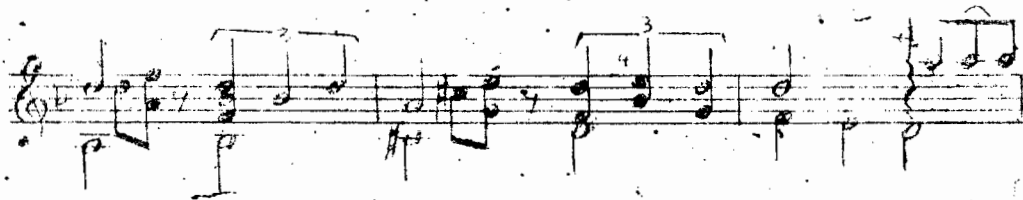
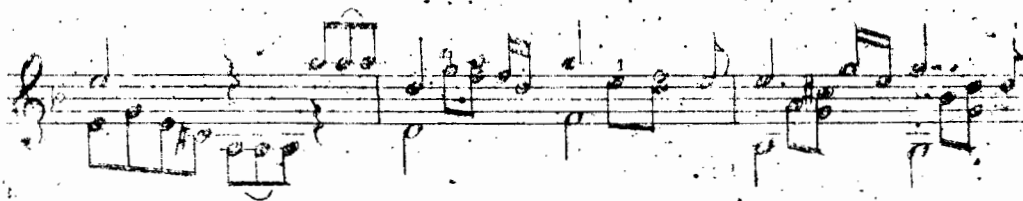
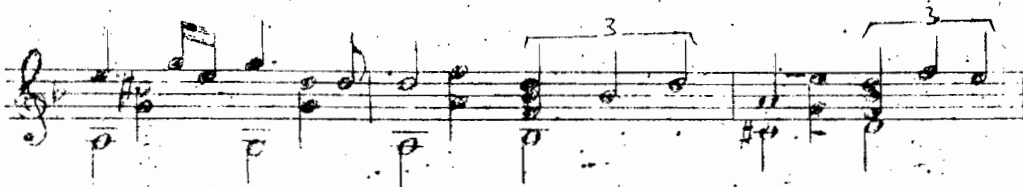


XA DẤU MẶT TRỜI



Handwritten musical notation on a five-line staff. The top line is a treble clef. The music consists of eighth and sixteenth notes, with some beamed together. There are several triplets indicated by a '3' over a bracket. A box encloses a group of notes, with '1', '2', and '3' written below it. A large '3' is written at the end of the staff.

Handwritten musical notation on a five-line staff. The top line is a treble clef. The music consists of eighth and sixteenth notes, with some beamed together. There are several triplets indicated by a '3' over a bracket.

Handwritten musical notation on a five-line staff. The top line is a treble clef. The music consists of eighth and sixteenth notes, with some beamed together. There are several triplets indicated by a '3' over a bracket.

Handwritten musical notation on a five-line staff. The top line is a treble clef. The music consists of eighth and sixteenth notes, with some beamed together. There are several triplets indicated by a '3' over a bracket. A box encloses a group of notes, with '3' written below it.

Handwritten musical notation on a five-line staff. The top line is a treble clef. The music consists of eighth and sixteenth notes, with some beamed together. There are several triplets indicated by a '3' over a bracket.