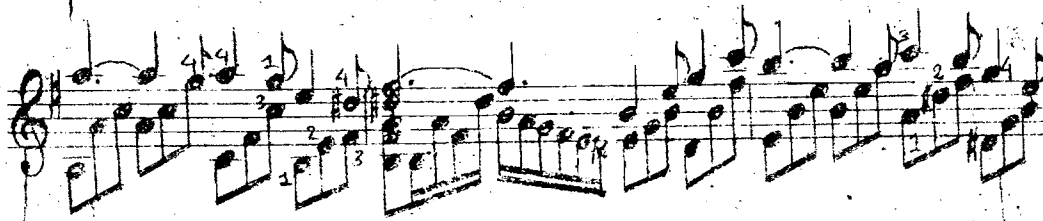


# MÙA THU TRONG MÙA

Trương Sa



Handwritten musical notation on a five-line staff. The key signature is one sharp (F#). The notation includes a treble clef, a common time signature (C), and a measure number '3' in the top left. The music consists of a series of eighth and sixteenth notes, some beamed together. Fingering numbers '1', '2', and '3' are written below the notes. A slur covers the first three measures.

Handwritten musical notation on a five-line staff. The key signature is one sharp (F#). The notation includes a treble clef and a common time signature (C). The music consists of a series of eighth and sixteenth notes, some beamed together. Fingering numbers '1' and '2' are written below the notes. A slur covers the first two measures.

Handwritten musical notation on a five-line staff. The key signature is one sharp (F#). The notation includes a treble clef and a common time signature (C). The music consists of a series of eighth and sixteenth notes, some beamed together. Fingering numbers '2', '3', and '4' are written below the notes. A slur covers the first three measures.

Handwritten musical notation on a five-line staff. The key signature is one sharp (F#). The notation includes a treble clef and a common time signature (C). The music consists of a series of eighth and sixteenth notes, some beamed together. Fingering numbers '2' and '3' are written below the notes. A slur covers the first two measures.

Handwritten musical notation on a five-line staff. The key signature is one sharp (F#). The notation includes a treble clef and a common time signature (C). The music consists of a series of eighth and sixteenth notes, some beamed together. Fingering numbers '2', '3', and '4' are written below the notes. A slur covers the first three measures.