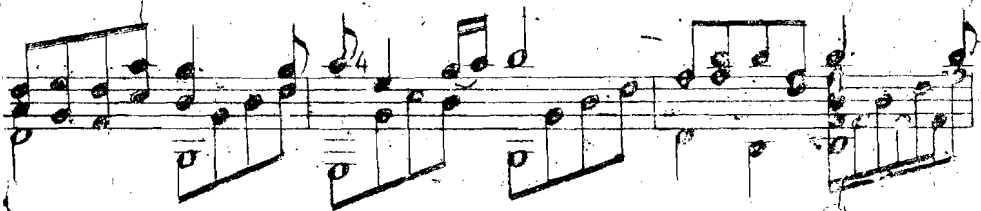
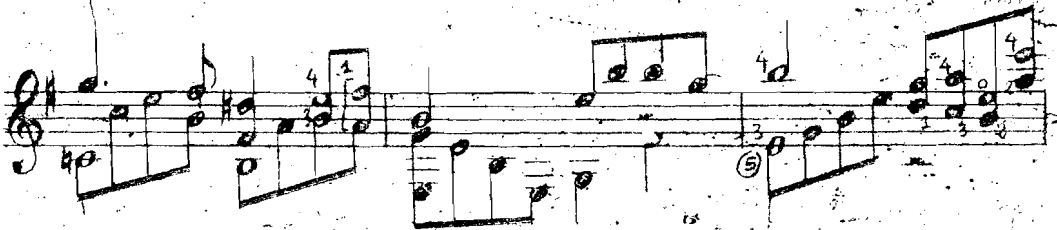
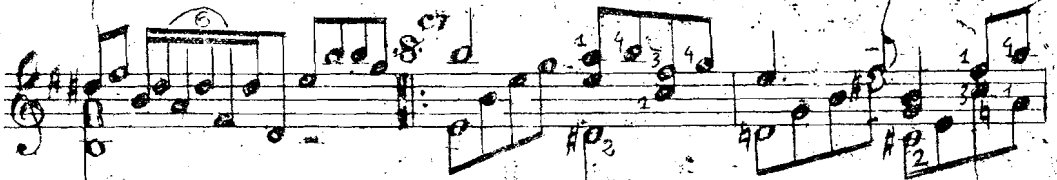
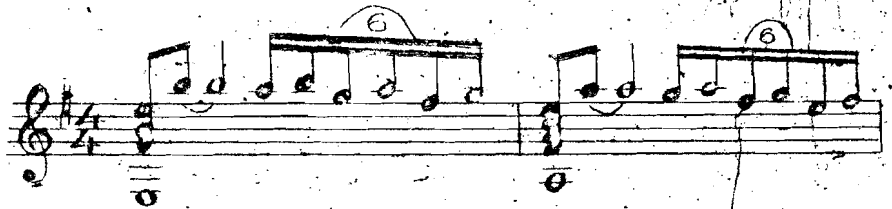


trong phiên: "Chèo trời tím"

NGƯỜI ĐI QUA ĐỒI TÔI

Phạm - Bình - Chương



Handwritten musical notation on a treble clef staff. The key signature is one sharp (F#). The notation includes a series of chords and melodic lines with various fingerings and articulations. Fingerings include 4, 3, 2, 1, 3, 2, 1, 4, 3, 2, 1, 3, 2, 1, 4, 3, 2, 1. Articulations include accents (h), slurs, and trills (tr). A downward-pointing arrow is at the beginning.

Handwritten musical notation on a treble clef staff. The key signature is one sharp (F#). The notation includes chords and melodic lines with fingerings and a trill. Fingerings include 4, 3, 2, 1, 3, 2, 1, 4, 3, 2, 1, 3, 2, 1. A trill (tr) is marked above a note.

Handwritten musical notation on a treble clef staff. The key signature is one sharp (F#). The notation includes chords and melodic lines with fingerings and a trill. Fingerings include 4, 3, 2, 1, 3, 2, 1, 4, 3, 2, 1, 3, 2, 1. A trill (tr) is marked above a note.

Handwritten musical notation on a treble clef staff. The key signature is one sharp (F#). The notation includes chords and melodic lines with fingerings and a trill. Fingerings include 4, 3, 2, 1, 3, 2, 1, 4, 3, 2, 1, 3, 2, 1. A trill (tr) is marked above a note.

Handwritten musical notation on a treble clef staff. The key signature is one sharp (F#). The notation includes chords and melodic lines with fingerings and a trill. Fingerings include 4, 3, 2, 1, 3, 2, 1, 4, 3, 2, 1, 3, 2, 1. A trill (tr) is marked above a note.